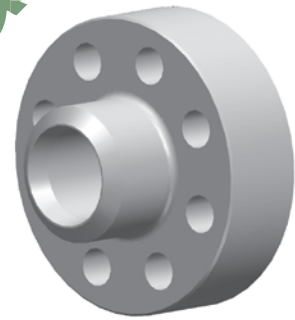
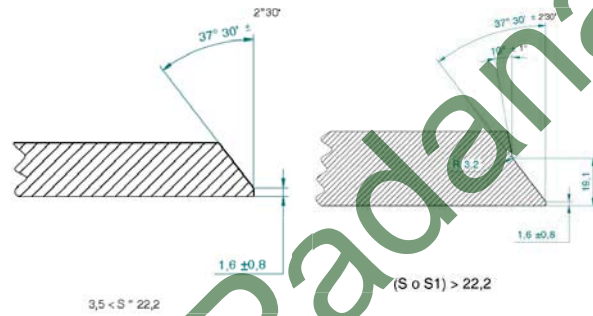
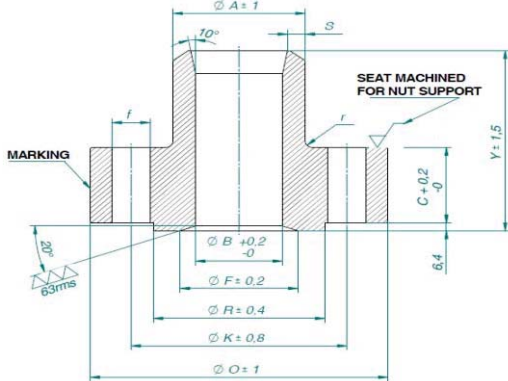


Neck Flanges STD-TB-HPU-5002 SH. 11 OF 29

DNP	A	B	O	K	R	F	C	Y	f	r	S	N° holes	STUD BOLTS		Mass Kg.
													DN	length	
		+0.5 -0													
3/4"	26.7	14.7	100	64	44	22.0	25	93.6	15.9	2	To be defined by customer	4	1/2"	100	1.8
1"	33.4	19.2	105	68	46	29.5	30	93.6	19.1	2		4	5/8"	120	2.4
1.1/2"	48.3	30.5	135	95	70	43.5	35	93.6	22.2	3		4	3/4"	130	4.4
2"	60.3	39.3	155	110	82	53.0	45	93.6	25.4	5		4	7/8"	160	6.9
3"	88.9	58.4	200	145	115	79.0	60	143.6	25.4	6		8	7/8"	190	15.4
4"	114.3	77.2	250	185	150	103.0	75	143.6	31.8	7		8	1.1/8"	235	26.5
6"	168.3	116.4	330	255	210	152.0	100	143.6	41.3	7		8	1.1/2"	325	55.5
8"	219.1	153.1	410	320	265	196.0	120	173.6	50.8	7		8	1.7/8"	370	109.0
10"	273.0	190.0	480	380	321	241.0	140	203.6	55.0	7		8	2"	430	161.0

Notes:

- 1) Dimensions: as shown in table.
- 2) Construction: forged.
- 3) ANSI B 16.5.
- 4) Materials e tests: per spc. G510 and as specified in p.o.
- 5) Dimensions in mm
- 6) Stud bolts: per ENI std 0368.00
- 7) Design conditions: 292 bars at 80°C; 268 bars at 160°C; 221 bars at 250°C.


Special Flanges STD-TB-HPU-5002 SH. 16 OF 29

DNP 1 Header	DNP 2 Branch	R	L1	H	STUD BOLTS		
					DN	N°	Length
3	3	44.5	92.5	2.4	3/4"	8	120
4	3	57.2	87.2	3.2	3/4"	8	120
6	3	84.2	82.2	3.2	3/4"	8	120
8	3	109.5	80.8	4.0	3/4"	8	120
10	3	136.5	79.6	4.0	3/4"	8	120
12	3	161.9	78.9	4.0	3/4"	8	120
14	3	177.8	78.5	4.0	3/4"	8	120
16	3	203.2	78.0	4.0	3/4"	8	120
18	3	228.6	77.7	4.8	3/4"	8	120
20	3	254.0	77.5	4.8	3/4"	8	120
22	3	279.4	77.2	4.8	3/4"	8	120
24	3	304.8	77.0	4.8	3/4"	8	120

Notes:

- 1) Dimensions and design: ANSI B 16.5 and as shown here.
- 2) Construction: forged.
- 3) Tolerances: ANSI B 16.5.
- 4) Facing: RF see ENI std 0355.00
- 5) Materials e tests: flanges ASTM A 182 TP 316L; stud bolt ASTM A 193 B B; nuts ASTM A 194 GR B.
- 6) Dimensions in mm.
- 7) Design conditions: 26 bars at 180°C.
- 8) Stud bolts & nuts: per ENI std 0368.00

