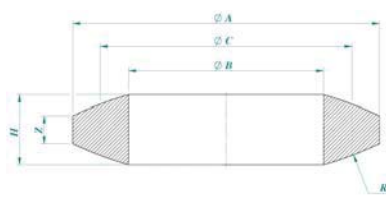
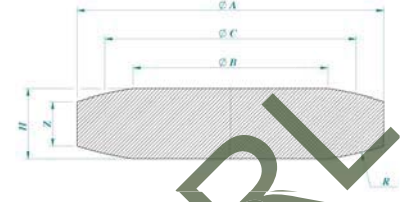


Lens gaskets
STD. SAIPEM TB.HPU.5002 Sh. 13/21 - Dwg Urea Casale 8577-00-SDP- 012

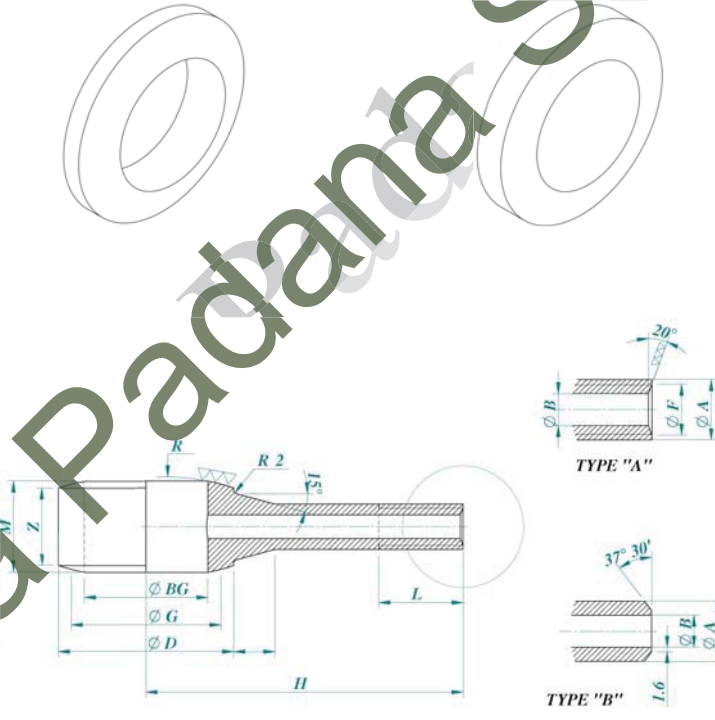
NPS	B +0,5 / -0	A	C Contact diameter	R Spherical radius	H	Z	Mass Kg.	
							Type A	Type B
1/4"	6,0	15	8,7	12,7	9	7	0,010	0,013
1/2"	11,3	21	15,0	22,0	9	8	0,020	0,027
3/4"	14,7	27	20,5	30,0	10	7	0,025	0,040
1"	19,2	32	25,0	36,5	10	7	0,040	0,060
1.1/2"	30,5	48	38,0	55,5	11	7	0,090	0,160
2"	39,3	56	46,5	68,0	11	6	0,100	0,200
3"	58,4	83	69,8	102,0	14	7	0,300	0,600
4"	77,2	108	91,0	133,0	18	9	0,600	1,300
6"	116,4	160	136,1	199,0	25	13	1,900	3,900
8"	153,1	212	175,8	257,0	30	16	3,500	8,000
10"	190,0	265	212,0	310,0	38	20	5,500	10,500
12"	232,0	317	258,0	365,0	45	23	13,200	28,400

Notes:

- 1) NPS= nominal pipe size in Inches.
- 2) Dimensions in mm.
- 3) Construction: forged.
- 4) Materials & tests: as per spec. CR.UR.510 and as specified on P.O.
- 5) Design conditions: 292 bars at 80°C; 268 bars at 160°C; 221 bars at 250°C.
- 6) Seal surface to have a max hardness of 160 brinell.

TYPE "A"

TYPE "B"

Lens gaskets with one branch
STD. SAIPEM TB.HPU.5002 Sh. 13/21 - Dwg Urea Casale 8577-00-SDP- 013

NPS gasket	NPS branch	BG +0,5 -0	G Contact diameter	D	H	R Spherical radius	M	Z	Stud bolts			Mass Kg.					
									DN"	Length	N'						
1/4"	1/4"	6,0	8,7	15	90	12,7	31,0	29,0	1/2	110	3	0,11					
1/2"	1/4"	11,3	15,0	21	100	22,0	31,0	28,0	1/2	115	3	1,14					
	1/2"												37,5	35,0	1/2	120	0,25
3/4"	1/4"	14,7	20,5	27	100	30,0	31,0	27,0	1/2	120	4	0,18					
	1/2"												37,5	34,0	1/2	130	0,29
	3/4"												44,0	41,0	1/2	135	0,42
1"	1/4"	19,2	25,0	32	100	36,5	31,0	27,0	5/8	140	4	0,21					
	1/2"												38,0	34,0	145	0,33	
	3/4"												44,0	40,0	155	0,46	
	1"												50,0	47,0	165	0,67	
	1"												115	50,0	170	0,50	
1.1/2"	1/4"	30,5	38,0	48	115	55,5	33,0	29,0	3/4	155	1	0,34					
	1/2"												40,0	36,0	160	0,50	
	3/4"												45,5	41,5	170	0,66	
	1"												52,0	48,0	180	0,90	
2"	1/4"	39,3	46,5	56	125	68,0	33,0	28,0	7/8	185	4	0,40					
	1/2"												40,0	35,0	190	0,57	
	3/4"												46,0	41,0	200	0,75	
	1"												53,0	48,0	205	1,00	
	1"												140	53,0	215	0,82	
3"	1/4"	58,4	69,8	83	150	102,0	43,0	36,5	7/8	225	8	1,06					
	1/2"												49,0	42,5	230	1,32	
	3/4"												55,5	49,0	235	1,66	
	1"												165	55,5	260	1,41	
	1"												190	59,0	270	1,77	
4"	1/4"	77,2	91,0	108	175	133,0	43,0	32,0	1.1/8	270	8	2,15					
	1/2"												46,0	37,0	275	2,15	
	3/4"												53,0	44,0	275	2,15	
	1"												59,0	50,0	280	2,59	
	1"												190	59,0	330	3,21	
6"	1/4"	116,4	136,1	160	215	199,0	50,0	38,0	1.1/2	335	8	3,85					
	1/2"												56,0	44,5	340	4,43	
	3/4"												62,0	50,5	350	5,10	
	1"												230	62,0	395	6,70	
	1"												255	51,0	37,0	395	6,70
8"	1/4"	153,1	175,8	212	255	257,0	58,0	43,0	1.7/8	400	8	7,75					
	1/2"												64,0	50,0	405	8,70	
	3/4"												70,0	56,0	410	9,75	
	1"												270	70,0	455	8,60	
	1"												290	62,6	44,6	460	11,70
10"	1/4"	190,0	212,0	265	295	310,0	68,0	50,0	2	460	8	11,70					
	1/2"												74,7	56,7	470	13,40	
	3/4"												74,7	56,7	470	13,40	
	1"												74,7	56,7	470	13,40	



NPS	A	B	F	L
1/4"	13,7	6,0	10,5	40
1/2"	21,3	11,3	18,0	40
3/4"	26,7	14,7	22,0	40
1"	33,4	19,2	29,5	50

- 4) End threaded: ASME B 1.20.1 – NPSM
End to be welded: smooth or plain.
- 5) Tolerances: ASME B1.20.1 (on the thread), and as shown in the table.
- 6) Materials & tests: according to spec. CR.UR.510. and as specified on purchase order.
- 7) Design conditions: 292 bars at 80°C; 268 bars at 160°C; 221 bars at 250°C.
- 8) Seal surface to have a max hardness of 160 brinell.

Notes:

- 1) NPS= nominal pipe size in Inches.
- 2) Dimension in mm. ANSI B 36.19.
- 3) Construction: forged.